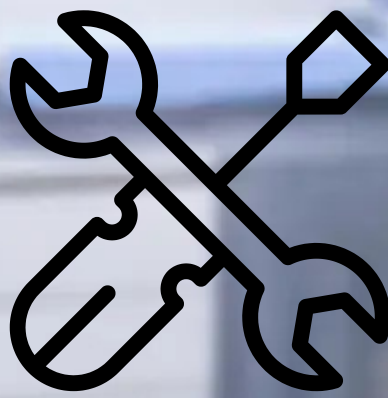


## PRODUCT CATALOGUE



**Product Quality  
and Reliability**



**Maintenance  
and Service**



**Cost  
Effectiveness**

Our company specializes in the supply and maintenance of high-quality medical equipment.

We provide a wide range of products to meet the needs of healthcare facilities and professionals, from diagnostic equipment to surgical instruments.

# ABOUT US

Libra Health care is a renowned company that specializes in the sales and service of high-quality medical equipment across India.

Founded in 2016, our company has established itself as a trusted and reliable provider of a wide range of medical equipment, including X-ray machines, OPGs, CBCTs, CT scanners, MRIs, thermal rolls, CR and DR systems, and more.

[Contact Us](#)



# INDEX

## X RAY

100 mA X- RAY .....	4
100 mA FIXED X- RAY .....	5
PORTABLE X RAY-1 .....	6
PORTABLE X RAY -2 .....	7
HAND HELD X RAY- 1 .....	8
HAND HELD X RAY- 2 .....	9

## DIGITAL SYSTEM

CR SYSTEM-1 .....	10
DR SYSTEM-1 .....	11
CR SYSTEM-2 .....	12

## C ARM MACHINE

C ARM .....	13
-------------	----

## THERMAL ROLL

SONY ROLL .....	14
CIYAN ROLL .....	15

## LED VIEWER BOX

X RAY VIEWER .....	16
--------------------	----

# 100mA X-RAY



**COST  
EFFECTIVE**



**MAINTENANCE**



**COST  
EFFECTIVE**



Type of Generator	2 Pulse , full wave Rectified (Line Frequency)
Output	8 Kw
mA Range	25-100 mA
Kvp Range	40-100 Kvp
Exposure Time	0.1 to 6 Sec.
Display	Digital ( KV , mA & mAs )
Input Supply	1 Ø 230 AC , 50 HZ ( ±5% )
Focal Spot in Size mm	1 to 2 mm
X-Ray Tube Type	Stationary Anode
Colimator	Manually Light Beam Diaphragm (LBD)
Tube Stand	Counter Balance Mobile
Protection	Tube Overload & High Voltage

**FOR ANY QUERY**

# 100mA FIXED X-RAY



**COST  
EFFECTIVE**



**MAINTENANCE**



**PERFORMANCE**

Type of Generator	2 Pulse , full wave Rectified (Line Frequency)
Output	8 Kw
mA Range	25-100 mA
Kvp Range	40-100 Kvp
Exposure Time	0.1 to 6 Sec.
Display	Digital ( KV , mA & mAs )
Input Supply	1 Ø 230 AC , 50 HZ ( ±5% )
Focal Spot in Size mm	1 to 2 mm
X-Ray Tube Type	Stationary Anode
Colimator	Manually Light Beam Diaphragm (LBD)
Tube Stand	Counter Balance Mobile
Protection	Tube Overload & High Voltage



**FOR ANY QUERY**

Visit us - [www.librahealthcare.in](http://www.librahealthcare.in) , [librahealthcare16@gmail.com](mailto:librahealthcare16@gmail.com)  
contact us - +91 96504 23189, 9953153038

# PORTABLE X-RAY



**COST  
EFFECTIVE**



**MAINTENANCE**



**PERFORMANCE**



Output kV Range	40kV-110kV in steps of 1kV
Maximum mA	100 mA
Maximum mAs	200 mAs
Peak Power	4000W
Timer Range	0.01s-5.0s
Mains Voltage	180VAC-260VAC
Focal Spot	1.88mm IEC
Weight	80 kG all inclusive
Technology	HF Integrated X-Ray
Controls	Soft Touch Keys / Remote Exposure

**FOR ANY QUERY**

Visit us - [www.librahealthcare.in](http://www.librahealthcare.in) , [librahealthcare16@gmail.com](mailto:librahealthcare16@gmail.com)  
contact us -+91 96504 23189, 9953153038

# PORTABLE X-RAY



kV Range	40kV-90kV
mAs Range	0.1mAs-40mAs
Peak Power	1600W
Focal Spot	0.8mm
InPut Power	Battery, Rechargeable
Collimator	In-built with high brightness lamp
Collimator Field	Max 14" x 14" @ 100cm SID
Weight	<10KG
Dimension	159 x 172 x 310 mm



**COST  
EFFECTIVE**



**MAINTENANCE**



**PERFORMANCE**

**BUY- QUERY**

Visit us - [www.librahealthcare.in](http://www.librahealthcare.in) , librahealthcare16@gmail.com  
contact us -+91 96504 23189, 9953153038

# HAND HELD X-RAY



## TECHNICAL SPECIFICATIONS

- Weight - 1.5 Kg
- Focal Spot - 0.4 mm
- Voltage - 60 kV(fixed)
- Current - 2.5 mA (fixed)
- Exposure Time Range - 0.05 - 0.5 sec
- Total Filtration - Min. 1.5 mm Al
- Maximum Duty Cycle - 1:60
- Power Input - 22.2 V
- Battery - Replaceable
- Line Voltage - 100-240 V + 10%



**COST  
EFFECTIVE**



**MAINTENANCE**



**PERFORMANCE**

**BUY- QUERY**

Visit us - [www.librahealthcare.in](http://www.librahealthcare.in) , librahealthcare16@gmail.com  
contact us -+91 96504 23189, 9953153038



# HAND HELD X-RAY



Output	70kV, DC
Tube mA	2.3mA
Exposure Time	0.01s-1.0s
Focal Spot	0.4 mm, IEC
Battery	Li-ion Rechargeable
Leakage	<0.03mGy on The Surface
Cone Length	(SSD) 200mm, Fixed



**COST  
EFFECTIVE**



**MAINTENANCE**



**PERFORMANCE**

**BUY - QUERY**

Visit us - [www.librahealthcare.in](http://www.librahealthcare.in) , [librahealthcare16@gmail.com](mailto:librahealthcare16@gmail.com)  
contact us -+91 96504 23189, 9953153038

# CR SYSTEM



**COST  
EFFECTIVE**



**MAINTENANCE**



**PERFORMANCE**

## CR SCREENS AND CASSETTES

Ideal for use with the TRIMAX CR System, our line of CR cassettes and phosphor screens offers a wide selection and high performance to meet the needs of various CR exams and clinical applications, including long-length imaging, orthopaedics, pediatrics and more.

- 8 x 10 in.
- 10 x 12 in.
- 11 x 14 in.
- 14 x 14 in.
- 14 x 17 in.
- 14 x 33 in.
- 24 x 30 cm
- 15 x 30 cm

**BUY - QUERY**

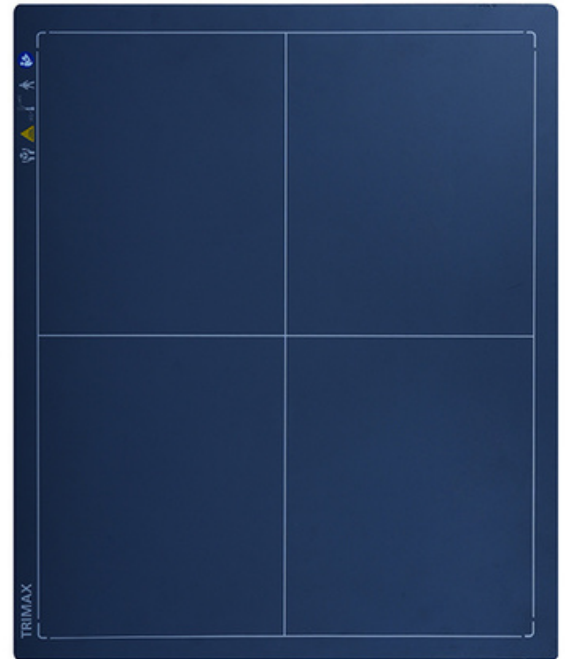
Visit us - [www.librahealthcare.in](http://www.librahealthcare.in) , librahealthcare16@gmail.com  
contact us -+91 96504 23189, 9953153038

# DR SYSTEM

1 YEAR  
FREE  
SERVICE

1  
YEAR  
WARRANTY

SATISFACTION  
100%  
GUARANTEE



**COST  
EFFECTIVE**



**MAINTENANCE**



**PERFORMANCE**

DETECTOR SIZE	14" x 17"
MATRIX SIZE	2K X 2k
DETECTOR TYPE	Wireless
PIXEL SIZE	130um
DETECTOR IMAGE STORAGE	>150 images
SCINTILLATOR	CsI
IP RATING	IP44

**BUY-QUERY**

Visit us - [www.librahealthcare.in](http://www.librahealthcare.in) , librahealthcare16@gmail.com  
contact us +91 96504 23189, 9953153038

# CR SYSTEM



Standard Components	FCR PRIMA T Image Reader (Model: CR-IR 392) AC power cord
Other System Components	IP cassette type CC FCR PRIMA Console, FCRView Dry Imager: DRYPIX PRIMA, DRYPIX 2000, 4000, 7000, Plus
Supplies	Imaging Plate ST-VI: 35 x 43cm (14"x 17"), 35 x 35cm (14"x 14"), 10"x 12", 8"x 10", 24 x 30cm, 18 x 24cm, 15 x 30cm (Variation) IP Cassette Type CC: 35 x 43cm (14"x 17"), 35 x 35cm (14"x 14"), 10"x 12", 8"x 10", 24 x 30cm, 18 x 24cm, 15 x 30cm (Variation)
Time Required for IP Feed/Load	Min. 64 sec. (Min. 54 sec.)*
Processing Capacity	Up to 57 IPs/hr. (Up to 67 IPs/hr.)*
Reading Specification	10 pixels/mm, 5 pixels/mm**
Time to Start on Display	Min. 33 sec.
Time to Print on DRYPIX PRIMA	Approx. 165 sec. (Approx. 155 sec.**) in case of 35 x 43cm
Number of Stacker	1
Network	10 Base T/100 Base TX
Dimensions (W x D x H)	560 x 540 x 392 mm (22"x 21"x 15")
Weight	39 kg (86 lbs.)
Power Supply Conditions	Single phase 50-60Hz AC120-240V ±10% 1.9A (max)
Environmental Conditions	Operating Conditions: • Temperature: 15-30°C • Humidity: 15-80%RH (No dew condensation) • Atmospheric pressure: 750-1060hPa



**COST  
EFFECTIVE**



**MAINTENANCE**

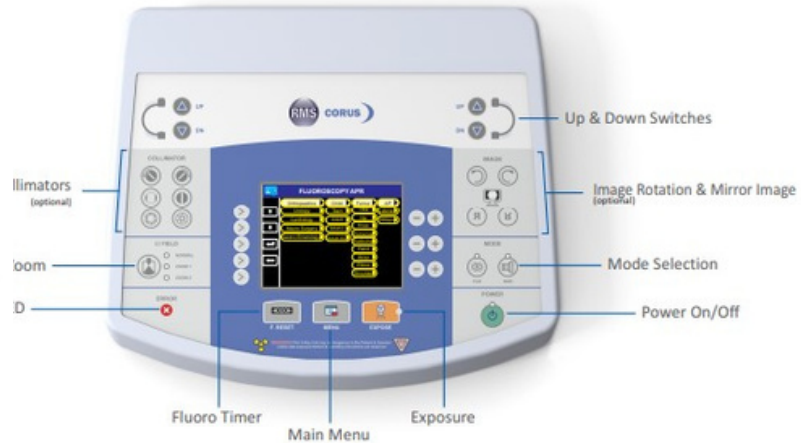
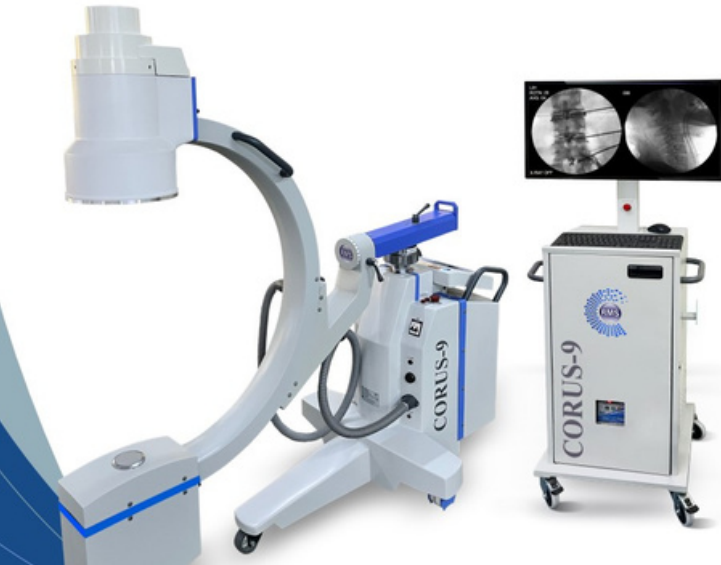


**PERFORMANCE**

**BUY - QUERY**

Visit us - [www.librahealthcare.in](http://www.librahealthcare.in) , librahealthcare16@gmail.com  
contact us -+91 96504 23189, 9953153038

# C ARM MACHINE



## X-ray Generator

Type	40 kHz, High frequency
Output	3.5 KW
Fluoro/ Radio KV	40-110 KVP with 1 KV / step
Fluoro mA	0.1-3 mA
Radiographic mAs	0.4 to 200 mAs (optional)
Radiographic mA	20 to 80 mA (optional)
Fluoro Timer	5 min cumulative
Radio Timer	Upto 5 sec
Fluoro Timer	300 sec cumulative
Fluoro Timer Alarm	Graded intermittent beep alarms
Fluoro selection	Continuous, single pulse, multi pulse upto 8 mA (optional)
HD mode	

## Tube Head

Type	Monoblock with Stationary Anode
Dual Focal Spots	Small-0.6 mm <sup>2</sup> Large-1.5 mm <sup>2</sup>
Thermal Protection	Auto cut-off
Collimator	Fixed

## Imaging System

Image Intensifier	9", Triple Field (Canon)
X-ray Grid	9"- 8:1, 100 LPI
CCD Camera	½" B/W CCD Camera with optics
Image Memory	PC based 500 Frames image memory per patient with unlimited data storage (as per hard disk capacity) Dual Monitor support for Last Image Hold (LIH) with memory Image Rotation, Image Mirror and IR remote support Negative Image, Contrast adjustment, Sharpness, Brightness, Advance and Ultra Enhancements Customizable key map configurations Dedicated Patient Mode (Without Registration) Image Format Support (BMP, JPG, PNG) Real time Horizontal and Vertical Video Flip Auto Save Image after exposure Patient Image Counter Digital Zoom up to 12X with scrolling Image Averaging up to 16 Frames Import Patient Data
Monitors	2 Nos. Monitors of 17" / 19" size
Others	Self Diagnostic Programme

## 1K x 1K Imaging Chain

CCD Camera	½" B/W CCD HD Camera high sensitivity and high resolution equivalent to 1K x 1K pixel image sensor
Image Memory	25000 Frames 720p HD image memory with LIH, Negative Image, Contrast adjustment, Real Time Image Rotation, Real time Digital Zoom, Image Mirror, IR remote support and Dual USB ports for Memory stick and Keyboard for patient details
Monitors	1 Nos. of 34" Full HD LED Monitor with Auto Clean, Active Back-light control and contrast booster
Others	Self Diagnostic Programme

## Control Display

Type	Graphical colored TFT display
APR mode	Present
Size	5.7"
Parameters	To display all Fluoro and Radiographic parameters viz. KV, FmA, time, exposure history and other indicators
Tube Temperature	Realtime temperature display on screen

## C-arm Mechanical

Arc Orbital movement	125°
Axial Rotation	± 180°
Horizontal Movement	210 mm
Vertical Movement	410 mm (motorized)
Swivel Range	± 12.5°
SID	942 mm
Clearance	775 mm
Arc-Depth	612 mm
Lateral Movement	Steering Handle
Locking Mechanism	Locks for all the manual movements of C-arm
Emergency Switch	Shutdown entire machine operations

## Trolley

For Monitors, Image Memory and Servo Voltage Stabilizer.

## Minimum Computer Configuration

OS: Windows 10 Professional (32/64bit) or higher, Processor: Intel i3 10th Generation 2.5 GHz or higher, Hard Disk 500 GB or higher, RAM 4GB or higher, USB Port/Serail Port, CD/DVD Optical Drive and High Resolution LED/TFT

## Power Supply

230 Volts AC ± 10V, 50 HZ. Single Phase, 15A ± 10% Regulation with independent earthing, line resistance < 0.4 ohms

## Optional

Slave Monitor, Iris or Parallel Collimators, Covers (Tube Head, II and Console), Laser Aimer and WiFi connectivity

**BUY-QUERY**

# SONY THERMAL ROLL



**COST  
EFFECTIVE**



**MAINTENANCE**



**PERFORMANCE**

## Generic Specifications

Roll dimensions 110 mm (W) x 18 m

Order unit 5 rolls

Print quantity Approximately 200 Prints

**BUY-QUERY**

Visit us - [www.librahealthcare.in](http://www.librahealthcare.in) , librahealthcare16@gmail.com  
contact us -+91 96504 23189, 9953153038

# CIYAN THERMAL ROLL



Product Name	Product Details	Printers compactable	No of prints/roll*	Qty
CY110S (110MM X 20M) Normal - Type I	CIYAN CY110S Type 1- Normal- Black & White printing media 270 prints per roll. 1 box - 5 rolls 80gsm Paper thickness Ultrasound Printing Paper (Paper for printing ultrasound scanning images )	UP-890MD, UP-895MD, UP-D895, UP-897MD, UP-D897MD, UP-D898MD, UP-X898MD, UPP-110S	270	1 BOX - 5 ROLLS
CY110HG (110MM X 18M) High Glossy - Type V	CIYAN CY110HG Type 5- High Glossy Black & White printing media 240 prints per roll. 1 box - 5 rolls 80gsm Paper thickness Ultrasound Printing Paper (Paper for printing ultrasound scanning images )	UP-895MD, UP-D895, UP-897MD, UP-D897MD, UP-D898MD, UP-X898MD, UPP-110HG	240	1 BOX - 5 ROLLS
CY84 HG (84 MM X 12.5 M) High glossy	CIYAN CY84HG Type 5- High Glossy - Black & White printing media 138 prints per roll. 1 box - 10 rolls 80gsm Paper thickness Ultrasound Printing Paper (Paper for printing ultrasound scanning images )	UP-D711MD, UPP-84HG	138	1 BOX - 10 ROLLS



**COST  
EFFECTIVE**



**MAINTENANCE**

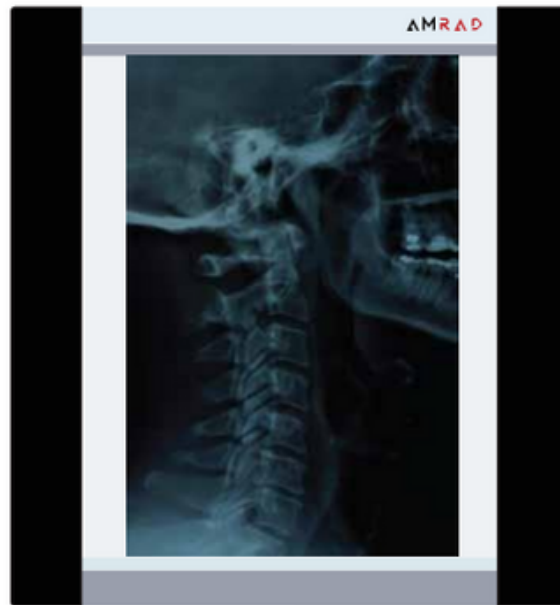


**PERFORMANCE**

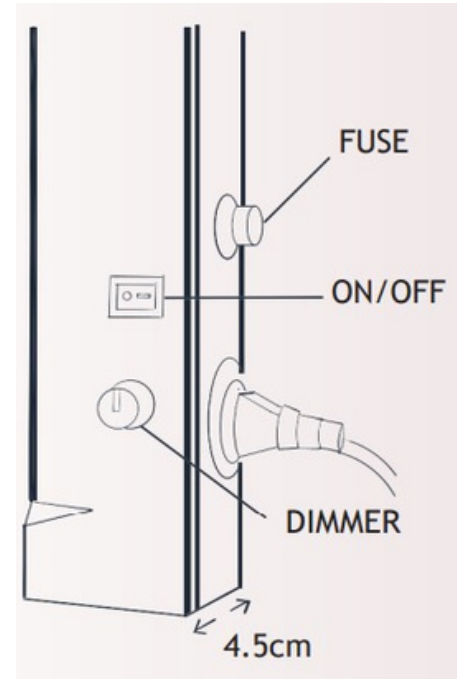
**BUY- QUERY**

Visit us - [www.librahealthcare.in](http://www.librahealthcare.in) , librahealthcare16@gmail.com  
contact us -+91 96504 23189, 9953153038

# LED X RAY VIEWER BOX



SINGLE VIEWBOX



DOUBLE VIEWBOX



TRIPLE VIEWBOX



QUADRUPLE VIEWBOX



**COST  
EFFECTIVE**



**MAINTENANCE**



**PERFORMANCE**

**BUY-QUERY**

Visit us - [www.librahealthcare.in](http://www.librahealthcare.in) , [librahealthcare16@gmail.com](mailto:librahealthcare16@gmail.com)  
contact us --+91 96504 23189, 9953153038



# Social Media Channel

